



Exam : 642-372

Title : Cisco Express Foundation for Systems Engineers

Ver : 11.08.07

QUESTION 1

What is one benefit of the Cisco anti-X defense strategy?

- A. applications security
- B. virtual firewall protection
- C. security events correlation for proactive response
- D. malware, virus, and worm mitigation

Answer: D

QUESTION 2

Cisco Software Advisor allows you to search either for software that is compatible with your hardware or for software with the specific features you need. Identify two items that are only available for selection when searching for specific features? (Choose two.)

- A. Category
- B. Type
- C. Series
- D. Model
- E. OS
- F. Engine/CPU

Answer: E, F

QUESTION 3

Your company has two primary divisions: Products and Services. The Products division is on network 150.10.64.0/21. The Services division is on network 150.10.72.0/21. You want to summarize both networks into one routing statement.

Which IP address and subnet mask combination would most efficiently accomplish this?

- A. 150.10.64.0/21
- B. 150.10.64.0/22
- C. 150.10.64.0/20
- D. 150.10.0.0/16

Answer: C

QUESTION 4

Which Cisco SDM feature allows you to specify whether you want SDM files installed on your PC or on your router?

- A. Install Shield Wizard
- B. Cisco SDM Express Wizard
- C. Cisco SDM Image Manager
- D. Create Connection Wizard

Answer: A

QUESTION 5

Which two of these statements best describe fast secure roaming for the wireless core feature set using autonomous access points? (Choose two.)

- A. It is compatible with all wireless clients.
- B. It reduces roaming latency through reduced client RF channel scanning enhancements.
- C. It reduces roaming latency to targeted times of less than 75ms.
- D. Roaming occurs without reauthentication through a centralized RADIUS server.
- E. It is enabled through WLSE deployment.

Answer: B, D

QUESTION 6

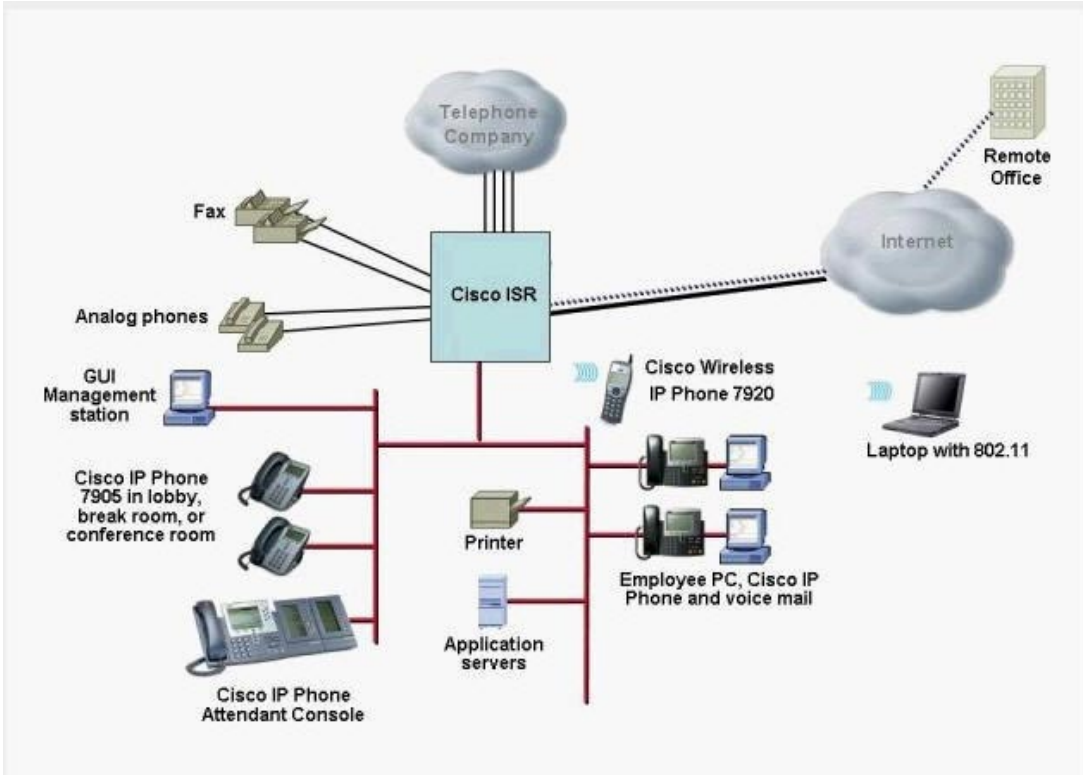
Wi-Fi Protected Access was an interim step on the way to the more secure WPA2. What was added in WPA2 to make it more secure?

- A. PEAP
- B. EAP-FAST
- C. AES encryption
- D. Rivest Cipher 4 encryption

Answer: C

QUESTION 7

Deploying integrated services on the Cisco ISR Router can help reduce network cost and complexity by integrating which four of these features on the ISR? (Choose four.)



- A. firewall and VPN
- B. IP telephony and voice mail
- C. Secure Access Control Server
- D. LAN switching and Wireless LAN
- E. IPS
- F. Anomaly Guard and Detection

Answer: A, B, D, E

QUESTION 8

Which two of these statements best describe the benefits of the Cisco Compatible Extensions Program? (Choose two.)

- A. offers a feature-rich implementation alternative to Wi-Fi certification
- B. accelerates the availability of innovative features while maintaining interoperability
- C. provides innovative features only on Cisco's wireless client adapters
- D. provides an evolving set of specifications for interoperability
- E. eliminates the need for testing by providing innovative features to wireless client vendors through a one-time license fee

Answer: B, D

QUESTION 9

On what lower-level transport protocol does CiscoWorks LAN Management Solution rely on and

why?

- A. TCP, because CiscoWorks LAN Management requires that packets require the reliability in the network
- B. UDP, because CiscoWorks LAN Management is an application that does not require the reliability of TCP
- C. IP, because CiscoWorks LAN Management requires the reliability of IP packets
- D. UDP, because CiscoWorks LAN Management requires the reliability of UDP's detection of lost packets and retransmission
- E. TCP, because CiscoWorks LAN Management does not require detection and retransmission of lost packets

Answer: B

QUESTION 10

Which CiscoWorks component would most help you locate end-station connections at the access switch level quickly?

- A. CiscoView
- B. Resource Manager Essentials
- C. Device Fault Manager
- D. Campus Manager

Answer: D

QUESTION 11

You are planning to connect your three branch offices to the corporate site via Frame Relay. The first branch office has been assigned the network 10.1.0.0/16, the second 10.2.0.0/16, the third 10.3.0.0/16, and the corporate headquarters uses 10.0.0.0/16. You would like to summarize all branch and corporate networks into a single route at the corporate site.

Which network address and subnet mask should you choose?

- A. 10.0.0.0/24
- B. 10.0.0.0/16
- C. 10.0.0.0/14
- D. 10.0.0.0/15

Answer: C

QUESTION 12

Which statement concerning the Active/Active failover feature is correct?

- A. ASA Security Appliance failover pair must have either an Unrestricted and UP license or a UP and FO-A/A license to be able to support Active/Active failover.
- B. If an active security context within the primary security appliance "fails", the status of the primary security appliance unit changes to failed" while the secondary failover security

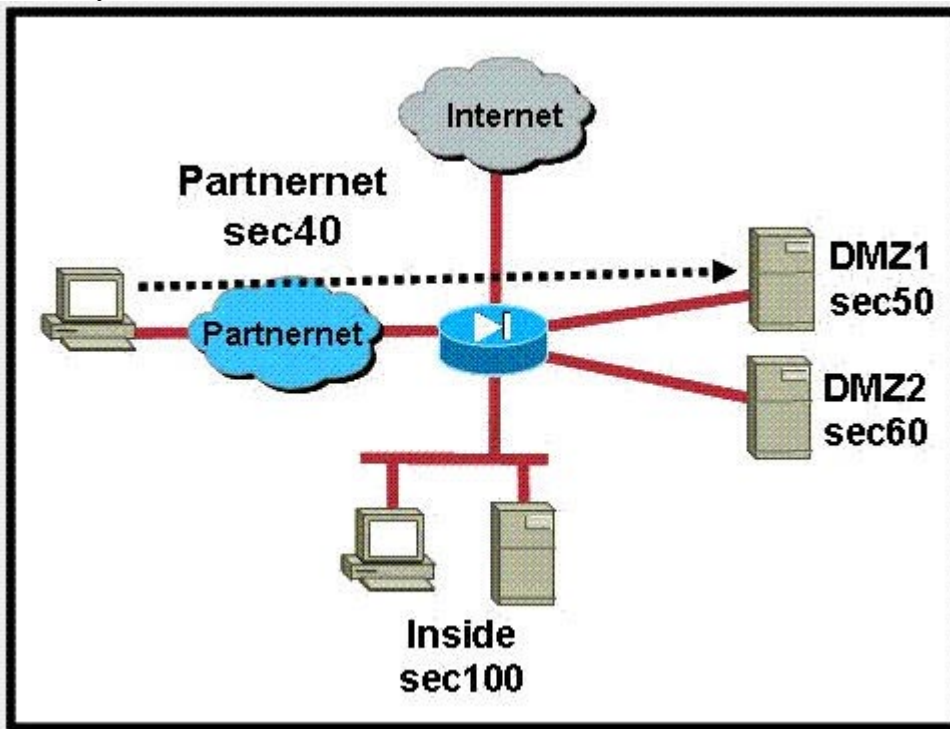
appliance unit transitions to "active."

- C. Active/Active failover is supported in "multiple mode" configuration only.
- D. Active/Active failover supports site-to-site IPSec VPN stateful failover.

Answer: C

QUESTION 13

Which two methods enable a PC connected to the PartnerNet to connect to a server on DMZ1 but deny it access to both DMZ2 and the Inside network? (Choose two.)

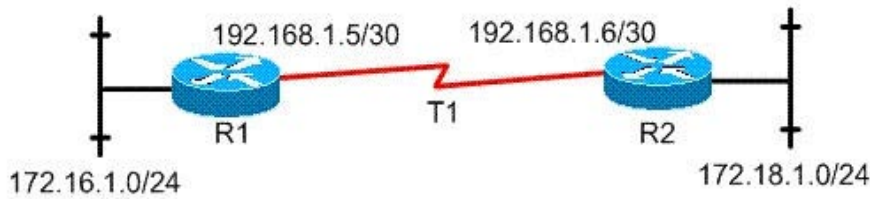


- A. Enable port address translation for traffic sourced from the PartnerNet PC to the DMZ1 server.
- B. Disable NAT control on DMZ2 and the Inside interfaces only.
- C. Enable static NAT translation for the DMZ1 server, and then use an ACL to permit the PartnerNet PC traffic to the DMZ1 server.
- D. Disable NAT control on the DMZ1 interface only.
- E. Lower the security level of the DMZ2 interface to 30.
- F. Raise the security level of the PartnerNet interface to 55.

Answer: C, F

QUESTION 14

What are two Cisco IOS commands that would verify connectivity between routers R1 and R2? (Choose two.)



- A. show cdp neighbor
- B. show controllers serial
- C. show frame-relay Imi
- D. show ip route
- E. show running-config

Answer: A, D

QUESTION 15

The Cisco Lifecycle Services approach is primarily applicable to which type of companies?

- A. the large enterprise with a global presence
- B. the large enterprise with a single campus
- C. the small- or medium-sized business
- D. All companies, regardless of size

Answer: D

QUESTION 16

The PIX Security Appliance feature set is a subset of the ASA Security Appliance feature set. Which two of these features are only supported by an ASA Security Appliance? (Choose two.)

- A. security contexts
- B. transparent firewall
- C. WebVPN
- D. Active/Active failover
- E. low latency queuing
- F. AIP-SSM intrusion prevention

Answer: C, F

QUESTION 17

Drag the WLAN management component on the left to the description that matches it on the right.

- WLSE
- WCS
- WDS enabled from an AP or IOS router
- WDS enabled from WLSM

- Layer 2 Fast Secure Roaming
- Wireless LAN Context Communication Protocol
- Layer 3 Fast Secure Roaming
- Lightweight Access Point Protocol

Answer:

- WLSE
- WCS
- WDS enabled from an AP or IOS router
- WDS enabled from WLSM

- WDS enabled from an AP or IOS router
- WLSE
- WDS enabled from WLSM
- WCS

QUESTION 18

A customer is considering purchasing either a Cisco Catalyst 2960 or Cisco Catalyst Express 500. Which feature can only be found on the Catalyst 2960?

- A. 48 Ethernet 10/100 ports
- B. Fast Ethernet and Gigabit Ethernet connectivity
- C. dual-purpose copper or fiber uplinks
- D. standalone fixed-configuration Layer 2 switching

Answer: A

QUESTION 19

Which two of these statements best describe the benefits of Cisco's wireless IDS functionality? (Choose two.)

- A. AirDefense for wireless IDS is required by autonomous APs.
- B. 2.40Hz CK management can monitor both 802.11 and non-802.11 CK interference.
- C. APs only monitor the RF channels that are servicing the clients.
- D. Cisco or CCX compatible client cards can extend the CK IDS service for autonomous APs.
- E. Autonomous APs must be dedicated IDS sensors while lightweight APs can combine client traffic and RF monitoring.

Answer: B, D

QUESTION 20

Which VMS Security Monitor tool allows you to monitor data for patterns of attacks from one

machine to a list of targets?

- A. Advanced Correlation Engine
- B. Advanced Notification Engine
- C. CiscoWorks Dashboard
- D. Management Center for CSA

Answer: A

QUESTION 21

What is the benefit of using the Cisco Easy VPN Server feature along with the Cisco software VPN client for implementing remote-access VPNs?

- A. The Cisco Easy VPN Server feature and the Cisco software VPN client use the same GUI configuration tool to simplify remote-access VPN configurations.
- B. The Cisco Easy VPN Server feature allows the Cisco software VPN client to receive its security policies from the central site VPN device. This minimizes the configuration requirements at the remote location for large remote access VPN deployments.
- C. The Cisco Easy VPN Server feature and the Cisco software VPN client use hardware-based encryption to reduce the CPU overhead of the central site VPN router.
- D. The Cisco Easy VPN Server feature and the Cisco software VPN client enable scalable remote-access VPNs deployment by using a thick client/thin server model where the central site VPN router can handle thousands of incoming VPN connections.

Answer: B

QUESTION 22

You are about to upgrade a router with a newer IOS version, but you would like to check for known bugs first. Which tool will allow you to do this most easily?

- A. Cisco Bug Toolkit
- B. Cisco Bug Matrix
- C. Cisco.com Search functionality
- D. Dynamic Configuration Tool

Answer: A

QUESTION 23

A customer is deploying a wireless core feature set using autonomous access points and requires Layer 2 roaming. What is a requirement when deploying this solution?

- A. a minimum of one Cisco 4100 Series WLAN Controller
- B. one WDS per subnet
- C. a minimum of one Wireless LAN Services Module
- D. all clients using Cisco Aironet Wireless LAN Adapters

Answer: B

QUESTION 24

Drag the security appliance feature on the left to the security issue that it addresses on the right.

modular policy framework	provides secure browser based corporate connectivity from an Internet kiosk or cyber cafe
application inspection	detects and blocks bandwidth consuming applications such as Kazaa and IM
cut-through proxy	provides customizable security services on a per traffic flow basis
policy policy map	provides malware, virus, and worm detection and mitigation
SSLVPN	
AIP-SSM (optional module)	

Answer:

modular policy framework	SSLVPN
application inspection	application inspection
cut-through proxy	modular policy framework
policy policy map	AIP-SSM (optional module)
SSLVPN	
AIP-SSM (optional module)	

QUESTION 25

Which two of these statements best describe the benefits of WPAv1?

- A. SSID broadcast prevention
- B. Improved mutual authentication
- C. Improved encryption through AES
- D. Improved protection against sniffing initialization vectors
- E. RF jamming prevention

Answer: B, D

QUESTION 26

The Cisco ASA Security Appliance can offer benefit of integrating which three security services into one device?

- A. IPS
- B. VPN Concentrator
- C. ACS server
- D. PIX firewall
- E. CSA MC
- F. DDoS Anomaly Guard and Detector

Answer: A, B, D

QUESTION 27

Drag the security appliance on the left to the application requirement on the right that it best supports.

PIX 535	provides up to 1.6 Gbps of firewall throughput
ASA 5540	provides up to 150 SSLVPN peers
ASA 5510	provides up to 5,000 IPsec peers
PIX 525	provides up to 10 physical interfaces
PIX 515	
ASA 5520	

Answer:

- PIX 535
- ASA 5540
- ASA 5510
- PIX 525
- PIX 515
- ASA 5520

- PIX 535
- ASA 5510
- ASA 5540
- PIX 525

QUESTION 28

What are three advantages of the Cisco Integrated Services Router product family? (Choose three.)

- A. provides advanced security such as hardware encryption acceleration
- B. provides investment protection through increased modularity
- C. comes equipped with at least one 1000-based TX interface
- D. contains integrated wireless access using the 802.11 g/b standard
- E. contains integrated web-based management tools for easy configuration and maintenance

Answer: A, D, E

QUESTION 29

What are three benefits of the Cisco Adaptive Threat Defense strategy? (Choose three.)

- A. using QoS techniques such as Traffic Policing to rate limit suspected traffic to prevent DoS attacks
- B. automatic reconfigurations of the security devices based on current security threats
- C. containment and control of security threats
- D. application security
- E. anti-x defense
- F. virtual firewall

Answer: C, D, E

QUESTION 30

Which of these statements regarding Cisco's WebVPN support is correct?

- A. Cisco ISR Routers with the Enhanced Security Bundles support WebVPN.
- B. Cisco security appliances act as a proxy between the end user and the target web server.
- C. Cisco PIX Security Appliances (running release 7.0) and Adaptive Security Appliances both support WebVPN.
- D. Cisco's WebVPN solution supports both TCP and UDP port forwarding for legacy application support.

Answer: B

QUESTION 31

At which stage of the Cisco Lifecycle Services approach would you test for system acceptance?

- A. Preparation
- B. Planning
- C. Design
- D. Implementation
- E. Operation
- F. Optimization

Answer: D

QUESTION 32

A customer has deployed a wireless core feature set using autonomous access points and now wants to include a satellite building 4500 feet away from the main campus. The customer also wants to provide wireless access to a courtyard for wireless clients in close proximity to the antenna mounting position. Which Cisco Aironet product is the most applicable solution?

- A. Cisco Aironet 1000 Series
- B. Cisco Aironet 1100 Series
- C. Cisco Aironet 1200 Series
- D. Cisco Aironet 1300 Series
- E. Cisco Aironet 1400 Series

Answer: D

QUESTION 33

Which of these best describes the Cisco Lifecycle Services approach?

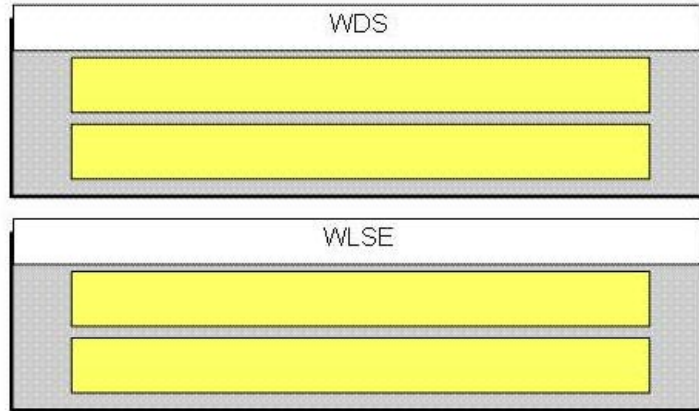
- A. a methodology for proactively updating equipment before it reaches the end of its life
- B. a methodology for introducing new technologies
- C. a methodology for creating a business plan
- D. a methodology for determining total cost or ownership

Answer: B

QUESTION 34

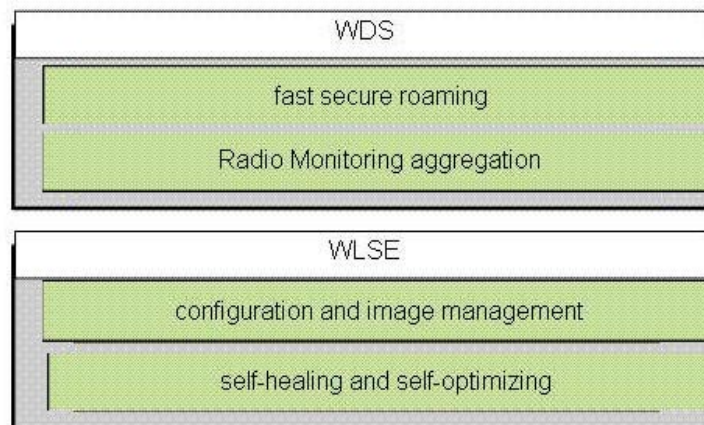
Drag the wireless software benefit on the left to the appropriate core feature set on the right.

- Radio Monitoring aggregation
- configuration and image management
- fast secure roaming
- self-healing and self-optimizing



Answer:

- Radio Monitoring aggregation
- configuration and image management
- fast secure roaming
- self-healing and self-optimizing



QUESTION 35

In CiscoWorks LAN Management Solution, what are some of the examples of a managed device (sometimes called network elements)? (Choose three.)

- A. routers
- B. LAN switches
- C. PBX switches
- D. TDM switches
- E. appliances

Answer: A, B, E

QUESTION 36

The Cisco SDM can configure most, but not all, routing protocols. Which two of these routing protocols can be configured using SDM? (Choose two.)

- A. BGP
- B. IGRP
- C. ISIS
- D. OSPF
- E. EIGRP

Answer: D, E

QUESTION 37

Which network management solution performs configuration, monitoring, and management of Cisco Firewall, VPN router, and IPS devices as well as maintains network device inventory and software distribution features?

- A. CiscoWorks Security Device Management Center (SD/MC)
- B. Security Device Manager (SDM)
- C. Adaptive Security Device Manager (ASDM)
- D. CiscoWorks VMS/Management Center (VMS/MC)

Answer: D

QUESTION 38

List three benefits of implementing an integrated security solution based on the Cisco Self-Defending Network strategy? (Choose three.)

- A. integrated security
- B. collaborative security system
- C. self provisioning
- D. Adaptive Threat Defense
- E. programmable security ASICs
- F. Cisco IOS-based security

Answer: A, B, D

QUESTION 39

What is one thing you should be aware of when conducting a wireless site survey?

- A. 5 GHz equipment will not be able to penetrate through walls as well as 2.4 GHz equipment.
- B. 2.4 GHz equipment will not be able to penetrate through walls as well as 5 GHz equipment.
- C. Mounting antennas near metal objects will slightly amplify the signal.
- D. When determining coverage, you should begin measuring attenuation from the middle of the room.

Answer: A

QUESTION 40

What is one reason you might recommend a solution using only autonomous access points to a customer?

- A. The customer requires Layer 3 roaming.
- B. The customer requires immediate wire line integration with a catalyst 6500 switch.
- C. The customer needs an outdoor-ready access point.
- D. The customer wants the option to migrate to LWAPP.

Answer: D

QUESTION 41

Which two of these are correct regarding access control lists? (Choose two.)

- A. An ACL can be applied to multiple interlaces.
- B. An ACL wildcard mask is identical to an IP subnet mask.
- C. There may be multiple ACLs per protocol, per direction, and per interface.
- D. There is an "implicit deny" at the end of an ACL and will result in a dropped packet.
- E. An ACL acts on all packets, those flowing thru the router and those originated by the router itself.
- F. An ACL will be processed from top to bottom and may have multiple matches that will act on the packet that is being tested.

Answer: A, D

QUESTION 42

A customer needs approximately 15 to 20 wireless APs for RF coverage. Given that the customer is going to use the 1010 light weight AP with the advanced feature set, what other product is required to complete this operational functionality?

- A. 2700
- B. WLSE
- C. 4124
- D. 2006
- E. 4112

Answer: C

QUESTION 43

Which three of these items can a wireless assisted site survey optimize? (Choose three.)

- A. radio transmit power setting
- B. security selection

- C. beacon interval
- D. IPS auto-response settings
- E. channel selection
- F. IDS settings

Answer: A, C, E

QUESTION 44

A Cisco Catalyst switch can belong to how many VTP domains?

- A. 1
- B. 2
- C. 1 to 1,005
- D. 1 to 4,096
- E. no limit

Answer: A

QUESTION 45

At which stage of the Cisco Lifecycle Services approach should customer education presentations occur?

- A. Planning
- B. Design
- C. Implementation
- D. Operation
- E. Optimization

Answer: A

QUESTION 46

At which stage of the Cisco Lifecycle Services approach would you recommend supporting and troubleshooting the system?

- A. Preparation
- B. Planning
- C. Design
- D. Implementation
- E. Operation
- F. Optimization

Answer: E

QUESTION 47

Which two of these data encryption AIM modes are found on the 3800 family of Cisco ISR Routers? (Choose two.)

- A. BPII
- B. SPII-Plus
- C. FPII
- D. EPII-Plus
- E. HPII
- F. HPII-PIus

Answer: D, F

QUESTION 48

Cisco ISP Routers offer which three of these security benefits? (Choose three.)

- A. onboard VPN accelerator
- B. events correlation and proactive response
- C. high-performance AIM VPN modules
- D. virtual firewall
- E. Cisco IOS Firewall and IOS IPS
- F. transparent firewall

Answer: A, C, E

QUESTION 49

Which item is a feature of Cisco Compatible Extensions, Version 3?

- A. full 802.11e compliance
- B. full WPAv2 compliance
- C. wireless IDS
- D. NAC

Answer: B

QUESTION 50

Which of these is a benefit of an integrated security management system?

- A. It provides configuration, monitoring, and troubleshooting capabilities across a wide range of security products.
- B. It integrates security device management products and collects events on an "as needed" basis to reduce management overhead.
- C. It integrates security management capabilities into the router or switch.
- D. It provides a single point of contact for all security configuration tasks thereby enhancing the return on investment.
- E. It leverages existing network management systems such as HP OpenView to lower the cost of implementation.

Answer: A

QUESTION 51

Which two of these statements describe important aspects of performing a wireless site survey?
(Choose two.)

- A. An 802.11 g access point with a variety of antennas can be used in all standard site surveys.
- B. Site surveys can be performed manually or through assisted site survey.
- C. Channel power during testing starts at the default minimum and gradually increases to the maximum.
- D. Overlapping access points can create performance problems.
- E. Surveys should be done after hours in an office building or during reduced inventory levels in warehouses.

Answer: B, D

QUESTION 52

Which two of these statements best describe fast secure roaming? (Choose two.)

- A. available only in autonomous APs
- B. available in autonomous and lightweight APs
- C. a feature of WDS in autonomous APs
- D. a feature of WDS in lightweight APs
- E. requires at least one AP and one Wireless LAN Services Module

Answer: B, C

QUESTION 53

Which tools on Cisco.com could you use to plan for correct Cisco IOS images to support a customer's security design and requirements? (Choose two.)

- A. Cisco IOS Matrix Navigator
- B. Cisco Feature Navigator
- C. Cisco IOS Package Planner
- D. Cisco IOS Security Planner
- E. Cisco Dynamic Configuration Tool

Answer: B, C

QUESTION 54

What are two important approaches to communicate when identifying a customer's security risks?
(Choose two.)

- A. Smaller companies are at less risk than larger enterprises, so their security needs are not as great.
- B. Business strategy should directly relate to the security policy and budget.
- C. The designated security expert should report to the IT department, since that is where the

solution will be implemented.

D. Security should be a continuous process.

E. Security solutions should come from multiple vendors to make it easier to coordinate security events from the point of origin.

Answer: B, D

QUESTION 55

After properly configuring multiple VLANs, an administrator has decided to secure its VLAN network. Which three steps are required to secure this environment? (Choose three.)

A. If a port is connected to a foreign device make sure to disable CDP, DTP, RPR, PAgP, UDLP, and any other unnecessary protocols, and enable UplinkFast/BPDU guard on it.

B. Enable root guard feature to prevent a directly or indirectly connected STP-capable device from affecting the location of the root bridge.

C. Configure VTP domains appropriately or turn off VTP altogether to limit or prevent possible undesirable protocol interaction with regards to the network-wide VLAN configuration.

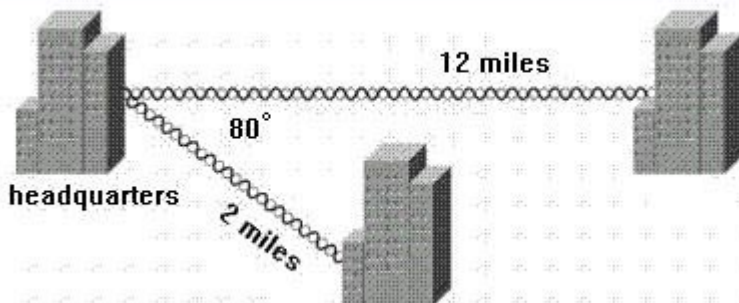
D. Set the native VLAN ID to match the port VLAN ID of any 802.1q trunk to prevent spoofing.

E. Disable all unused ports and place them in an unused VLAN to avoid unauthorized access.

Answer: B, C, E

QUESTION 56

A company wants to connect two new offices to their main office.



One building is 2 miles away from the headquarters and the other is 12 miles away. The angle between the buildings is 80 degrees.

Which antenna is the best to use in this situation?

A. 12 dBi omni

B. 10 dBi yagi

C. 14 dBi sector

D. 21 dBi dish

Answer: C

QUESTION 57

Cisco ASDM provides 16 different graphs the help identify security risks by displaying data about

potentially malicious activity. What is one kind of data these graphs show?

- A. stateful packet statistics
- B. real-time analysis & dropped packets
- C. ACL statement matches
- D. portmap requests

Answer: D

QUESTION 58

Which Cisco security tool can best determine if a Cisco ISR router is properly secured?

- A. Cisco SDM Security Audit
- B. Cisco Security MARS
- C. Cisco Security Agent MC
- D. Cisco Security IntelliShield
- E. CAN

Answer: A

QUESTION 59

Deploying ISRs with integrated security services can help lower the total cost of ownership. Which of these Cisco ISR Router features illustrate this point?

- A. using built-in on-board VPN acceleration to reduce the amount of VPN configuration tasks
- B. using the USB port to perform fast Cisco IOS image upgrade
- C. using the security audit feature to implement inline Intrusion Prevention System
- D. using the SDM configuration tool to reduce training costs
- E. using the high performance AIM to increase the Cisco IOS Firewall performance

Answer: D

QUESTION 60

Which component of Cisco ASDM provides administrators with a complete system overview and device health statistics at a glance?

- A. Dashboard
- B. AIP SSM
- C. Resource Manager
- D. Cisco ASDM Launcher

Answer: A

QUESTION 61

Which two of these statements best describe the benefits of WPAv2? (Choose two.)

- A. SSID broadcast prevention
- B. man-in-the-middle attack protection
- C. cost reduction through software upgrades in all existing hardware
- D. dynamic key generation
- E. RF jamming prevention

Answer: B, D

QUESTION 62

Which Cisco PIX and ASA feature provides reliable, comprehensive security against virus and worm propagation, as well as data theft?

- A. WebVPN for SSL
- B. IPSec
- C. AIM
- D. Stateful packet inspection

Answer: A

QUESTION 63

What is the purpose of the Dynamic Configuration Tool?

- A. To determine the correct IOS image to support your modules or blades
- B. To allow for the mass deployment of devices with minimal configurations.
- C. To test router configurations virtually prior to implementing them in your production network
- D. To provide an easy way to check for known bugs in IOS releases
- E. To verify that hardware such as modules are compatible with your chassis

Answer: E

QUESTION 64

Drag the description on the left to match the correct phase of the Cisco Self Defending Network strategy on the right.

- point products - multiple security devices using unique management software
- security becomes a network-wide system: endpoints + network + policies
- multiple security services and devices working in isolation to mitigate attacks
- every network element is a point of defense
- applications security + anti-x defenses + containment and control

- SDN phase 1
- SDN phase 2
- SDN phase 3

Answer:

- point products - multiple security devices using unique management software
- security becomes a network-wide system: endpoints + network + policies
- multiple security services and devices working in isolation to mitigate attacks
- every network element is a point of defense
- applications security + anti-x defenses + containment and control

- every network element is a point of defense
- security becomes a network-wide system: endpoints + network + policies
- applications security + anti-x defenses + containment and control